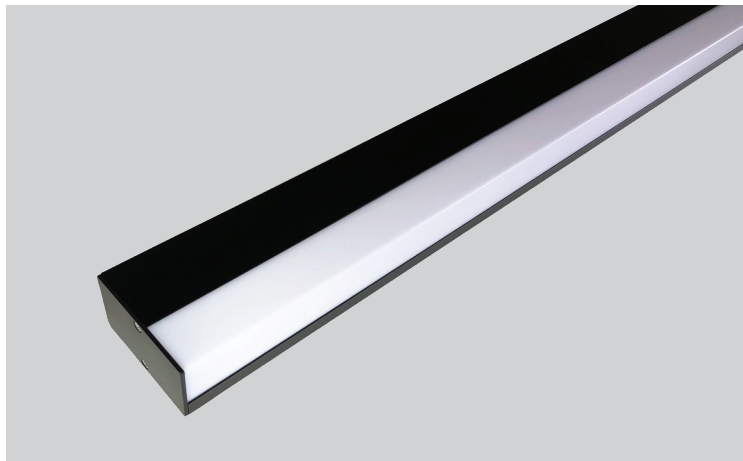


LUMATECH

Linear Lighting Solutions

MILLBROOK Vanity Light



The Millbrook series of mirror lights have been designed to provide high vertical output from a diffused source to give shadow free facial illumination without glare. Wall mounted above or beside mirrors the body includes a 10mm blank on the bottom to allow for the depth of the mirror. Extruded in New Zealand and fitted with quality components.

DIMMING OPTIONS



COLOURS

Powder Coat Colours

- Dulux Mannex White
- Dulux Mannex Black
- Dulux Mannex Silver Pearl (Light Grey)
- Custom colours to order

MODELS

MODEL	LENGTH	WATTS	LM
Millbrook600	600mm	16	780
Millbrook750	750mm	20	975
Millbrook900	900mm	23	1170
Millbrook1200	1200mm	32	1560
Millbrook1500	1500mm	39	1950
Millbrook1800	1800mm	42	2340
Millbrook2400	2400mm	56	3120
Millbrook3600	3600mm	84	4680

Specify profile finish & colour temperature when ordering
Code e.g. MILLBROOK600-BK3K

FEATURES

- Maximum single piece length of 3600mm to maintain the IP44 rating.
- Light source in 3000K or 4000K CRI95 & R9 of 95 (TM-30 Rf 94.8 Rg 101.7)
- Opal Acrylic Wrap Lens with complete LED diffusion for homogeneous surface.
- Aluminium extruded powder coated body.
- Tridonic SELV Driver and LED for user safety
- Quick connect terminal block up to 2 x 2.5mm²
- 230VAC & Power Factor >0.9
- DC Ripple <1.5%

